

SUMMER CREEK

164

BEING A PORTION OF GOLDEN LAKES VILLAGE, P.U.D.
 IN SECTIONS 29 & 32, TOWNSHIP 43 SOUTH, RANGE 42 EAST
 BEING A REPLAT OF PORTIONS OF TRACTS 9, 10, 11 & 18 BLOCK 3,
 PALM BEACH FARMS COMPANY PLAT No. 3 (PLAT BOOK 2, PAGES 45-54)
 PALM BEACH COUNTY, FLORIDA.

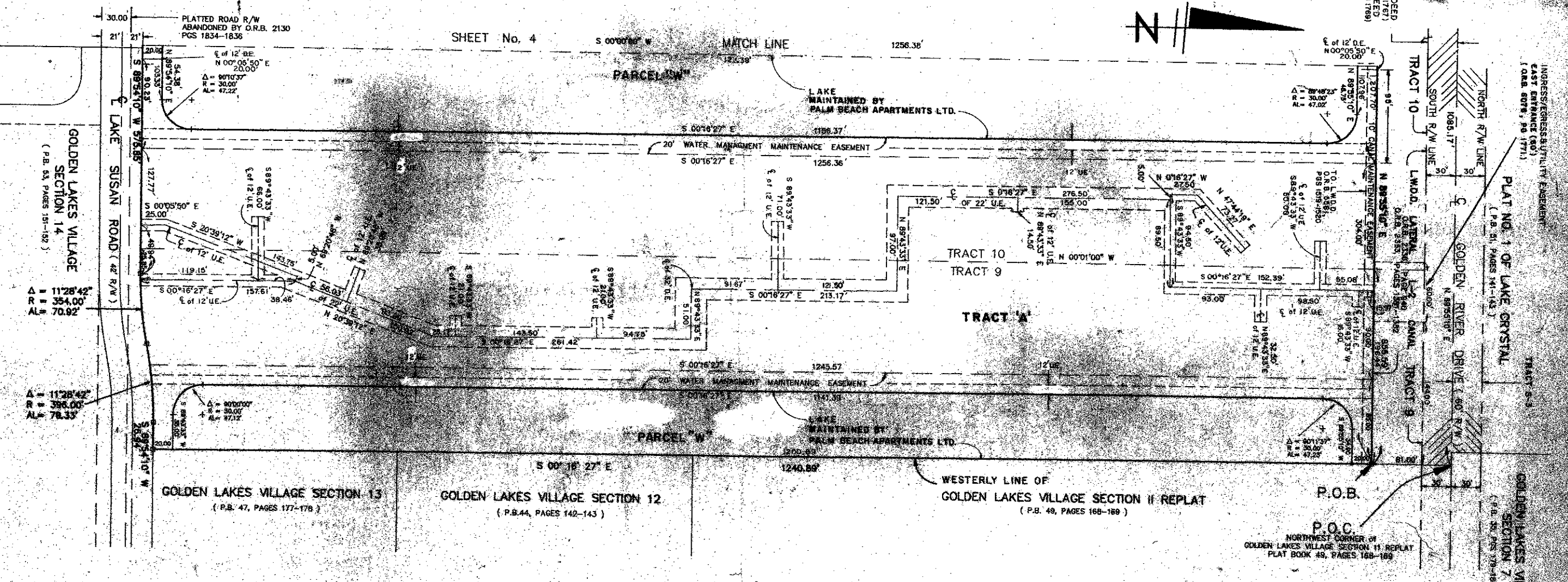
SHEET 5 OF 5

JUNE, 1989

COUNTY OF PALM BEACH
 STATE OF FLORIDA
 This Plat is filed for record
 this _____ day of _____
 1989 and duly recorded in Plat Book No. _____
 JOHN B. DUNKLE, Clerk, Circuit Court

QUIT CLAIM DEED
 (FOR SOUTHERN
 EASEMENT DEED)
 (O.R.B. 6076, PG. 1759)

KEY MAP
 SECTIONS 29 & 32; TWP 43 S; RGE. 42 E



0251-002

64/164

Field Book No.	PL	ROBERT E. BRIN & ASSOCIATES, INC.
Design	H. WILLIAMS	ENGINEER, PALM BEACH, FLORIDA
Drawn	H. WILLIAMS	WEST PALM BEACH, FLORIDA
Checked	M. WILCOX	

SUMMER CREEK

7-2-89
 PAGE 14
 FLOOR PLAN * ISCA
 ZONING 25
 ZIP CODE 33411
 PALM BEACH FARMS COMPANY, P.L.C.